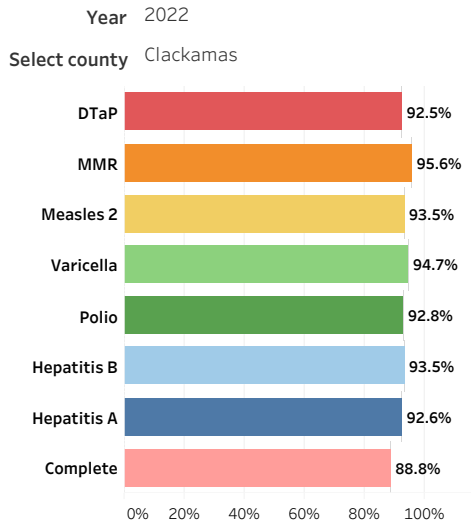
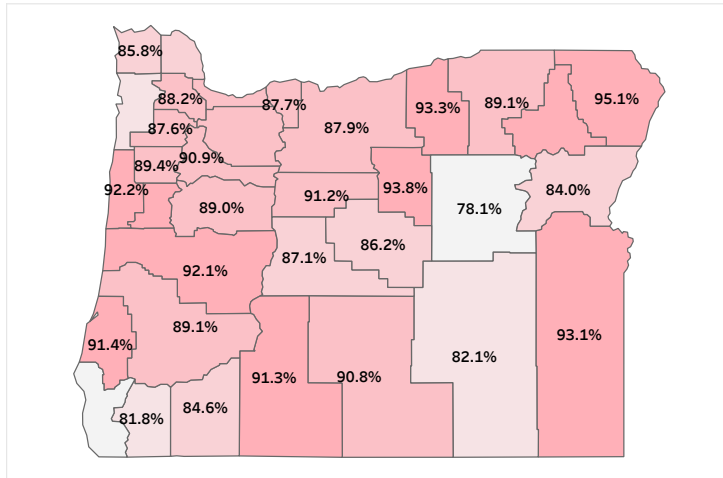


## Kindergarten Immunization Data

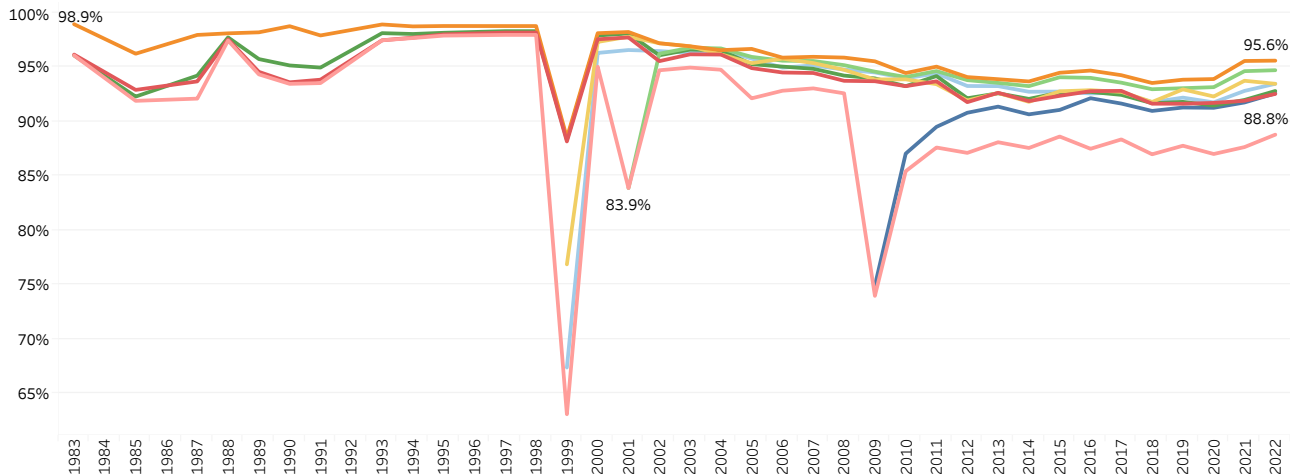
Statewide, over 88% of kindergarten students completed all school-required vaccines in 2022. From 92% to 95% of kindergartners completed each individual required vaccine. Use the year and county selection tools to change the displays of vaccination rates. *Note: county-specific immunization rates are missing for 1992 and 1996.*



The map shows the percent of kindergartners with complete school-required vaccines by county. The darker the color, the higher the vaccination rate.



Kindergarten vaccination rates for DTaP (Diphtheria, Tetanus and Pertussis), Hepatitis A, Hepatitis B, MMR (1st dose of Measles, Mumps and Rubella), 2nd dose of Measles, Polio, and Varicella are shown from 1983 to 2022. To look at one vaccine at a time click on the vaccine of interest. Dips in immunization rates in 1999, 2001, and 2009 occurred when new vaccine requirements were added for kindergartners, with increases seen in subsequent years.



Counties with fewer schools and smaller student populations may see large changes each year because small changes in vaccinations and exemptions have a greater impact on smaller populations than larger ones. To provide helpful context for interpreting the county-level data, the table below contains 2022 kindergartner enrollment and school counts as well as population estimates from Portland State University's (PSU) 20..

	Year	Number of sites serving kindergartners	Kindergarten site enrollment	<5-year-olds (PSU)	Total Population (PSU)
<b>Clackamas</b>	2022	105	4,083	22,099	425,316

**Notes:** Data comes from the Immunization Primary Review Summary reports (section E-H) collected annually in March; years 1983-2003 include Kindergarten and 1st grade; 2004 onward include Kindergarten data alone; years 1983-2014 include public, private and online schools; 2015 onward, statewide rates include public, private and online schools while county rates include only public and private schools; data censored for counties and years where enrollment falls below..